

SIMCON

Installation Guide

CADMOULD



Table of contents

Table of contents	2
1 General	3
2 Installation CADMOULD	3
2.1 Download of the CADMOULD -Installer.....	3
2.2 Installation of CADMOULD	3
2.3 Optional: Defining the license file.....	3
3 Configuration of the dongle driver	3
3.1 Configuration of access from remote clients.....	4
3.2 Configuration of access to remote license managers	4
4 The CADMOULD Maintenance Tool	4
4.1 Opening the Maintenance Tool.....	4
4.2 Managing program updates	5
4.3 Managing license files.....	5
4.4 Managing dongles.....	5
4.5 Other functions.....	6

1 General

In order to use CADMOULD, a dongle and a license file (simcon.enc) are required in addition to the successful installation of the program. The license file can be fetched by the software itself when starting the first time if there is an internet connection available. If not, please contact us to get the license by mail. The dongle driver is included in the CADMOULD-Installer.

In case of a network dongle, any computer in the network can be used as dedicated license server. In this case, the dongle driver needs to be installed on the license server. You can download the dongle driver using the following link:

<https://simcon.com/downloads/haspdinst.exe>

After downloading, start this file with the command "haspdinst.exe -install" in a command line with administrator rights.

2 Installation CADMOULD

Important: The following steps require administration rights!

2.1 Download of the CADMOULD -Installer

Download the CADMOULD-Installer from simcon's homepage.

The download link can be found in the CADMOULD-Delivery-Email.

2.2 Installation of CADMOULD

Install CADMOULD using the downloaded installer.

You can install the program "Team Viewer" and the "Net-Programs" and create a shortcut for CADMOULD projects. The program "Team Viewer" enables the remote administration on your computer for potential support requests. The "Net-Programs" only need to be installed for the simultaneous use of CADMOULD and CADMOULD Server Client.

Important: During the installation of CADMOULD, the programs "Microsoft Visual C++ Redistributables 2013", "Microsoft Visual C++ Redistributables 2015" and "Microsoft .NET Framework 4.7" will be automatically installed on your computer if required. If the automatic installation of the programs fails for any reason, CADMOULD cannot be started. In this case, you can manually download and install the programs "Microsoft Visual C++ 2013 Redistributables", "Microsoft Visual C++ Redistributables 2015" and "Microsoft .NET Framework 4.5" using the following links:

https://simcon.com/downloads/Redistributables/2013/vcredist_x64.exe

https://simcon.com/downloads/Redistributables/2015/vc2015_redist.x64.exe

<https://www.simcon.com/cadmould-download/Helper/NDP472-KB4054530-x86-x64-AILOS-ENU.exe>

2.3 Optional: Defining the license file

Optional, if the license file cannot be fetched automatically and you received it by mail.

Either copy the license file „simcon.enc“ into the CADMOULD-Installation-Folder (by default „C:\Program Files (x86)\CADMOULD\X“; „X“ represents the installed CADMOULD-Version) or define the location of the license file with help of the CADMOULD Maintenance Tool (see chapter 4.2). The license file is delivered to you in a Zip-File, which is attached to the CADMOULD-Delivery-Email.

The following sequence of prioritising applies when stating the license file used for the program start:

- 1) License path stated via the-lic option (file name does not have to be "simcon.enc")
- 2) License path stated in the CADMOULD Maintenance Tool (File does not need to be "simcon.enc")
- 3) "simcon.enc" in the program's installation path
- 4) "simcon.enc" one level higher than the installation path of the program
- 5) "simcon.enc" in the directory "AppData\Simcon\cm\X" (X representing the version number)

3 Configuration of the dongle driver

After successfully installing CADMOULD, starting CADMOULD should succeed without further configurations.

In case of licensing errors, you can check whether the dongle driver is properly installed by opening the following link:

<http://localhost:1947>

If the dongle driver is successfully installed, you will see the "Sentinel Admin Control Center" page.

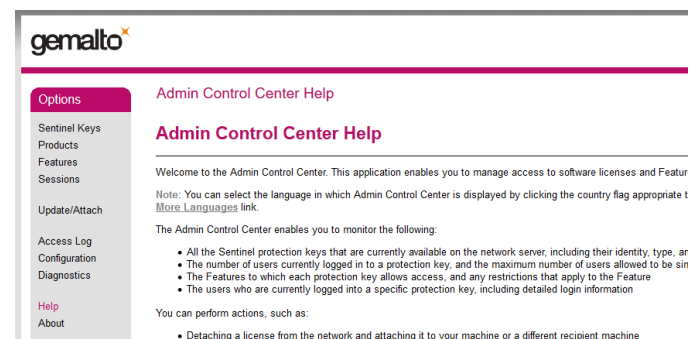


Fig. 1 Sentinel Admin Control Center

If the web page shown above is not available, the dongle driver might not be installed or started correctly. To restart the installation of the dongle driver, please use the installer "haspdinst.exe" located in the CADMOULD-Installation-Folder (by default „C:\Program Files

(x86)\CADMOULD\X\Y**Hardlock**"; „X“ represents the CADMOULD-Version, and Y the Version number). Alternatively, you can download the dongle driver using the following link:

<https://simcon.com/downloads/haspdinst.exe>

After downloading, start this file with the command "haspdinst.exe -install" in a command line with administrator rights.

If the "Sentinel Admin Control Center" is still not available afterwards, the dongle driver might be blocked by the firewall. In this case, please check your firewall settings.

In case of licensing errors after the successful installation of the dongle driver, either the wrong dongle or the wrong license file might be used to start the software. In this case, please refer to the chapters [4.2](#) & [4.3](#) for the dongle and license selection with help of the CADMOULD Maintenance Tool.

The following sequence of prioritising applies when stating the dongle used for the program start:

- 1) Dongle stated via the "-dng KeyID" option
- 2) Dongle stated via the CADMOULD Maintenance Tool
- 3) Dongle stated via the environmental variable "HASP_KEYID" with value of the KeyID of the regarding dongle
- 4) Automatic dongle selection of the program

If a network dongle is not available neither in the „Sentinel Admin Control Center“ nor in the CADMOULD Maintenance Tool, please check the configuration of access from remote clients (see chapter [3.1](#)) and the configuration of access to remote license managers (see chapter [3.2](#)).

3.1 Configuration of access from remote clients

In case of using a network dongle for licensing, the license server, where the network dongle is plugged into, should be available in the network per default.

To check, if the license server is properly set up in case of licensing errors, please open the link "Configuration" in the "Sentinel Admin Control Center" and head forward to the tab "Access from Remote License Clients". To open the "Sentinel Admin Control Center", please use the following link: <http://localhost:1947>

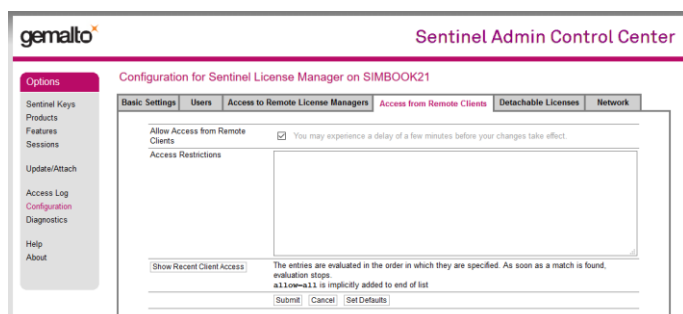


Fig. 2 Access from Remote Clients

Here, the option "Allow Access from Remote Clients" needs to be enabled to make a network dongle available for other network computers.

3.2 Configuration of access to remote license managers

In case of using a network dongle plugged into a remote network computer, the dongle might not be available automatically and thus, the dongle is not listed in the list of available dongles in the CADMOULD Maintenance Tool (see chapter [4.3](#)).

In this case, open the link "Configuration" in the "Sentinel Admin Control Center" and head forward to the tab "Access to Remote License Managers". In most cases, it can be already helpful to enable the option "Aggressive Search for Remote Licenses". To open the "Sentinel Admin Control Center", please use the following link:

<http://localhost:1947>

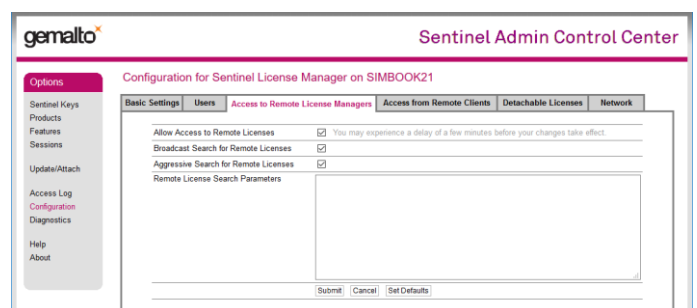


Fig. 3 Access to Remote License Managers

Another option to find a network dongle, which is plugged into a remote network computer, is by adding the IP-address of the remote computer into the field "Remote License Search Parameters" in the tab "Access to Remote License Managers" of the "Sentinel Admin Control Center".

If none of these options work, please check your network and firewall settings to see whether the remote access to the network dongle is blocked.

4 The CADMOULD Maintenance Tool

For the simplified administration of existing CADMOULD installations, the CADMOULD Maintenance Tool offers the possibility of installing program updates, managing license files and dongles and defining special start options for starting CADMOULD.

4.1 Open the Maintenance Tool

The CADMOULD Maintenance Tool automatically searches for available program updates when a user has logged on and then automatically after approximately every 5 hours and informs about them as soon as new program versions are available.

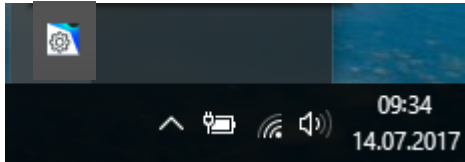


Fig. 4 CADMOULD Maintenance Tool

You open the Maintenance Tool with "Preferences"

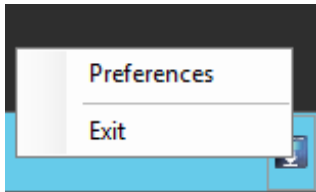


Fig. 5 Options in CADMOULD Maintenance Tool

Here you can manage the installed CADMOULD versions as well as the license files, dongles and start options used to start the programs. When opening, the search for new versions is started at the same time.

If a connection to the update server cannot be established, please check your firewall and system proxy settings.

4.2 Managing program updates

The available updates for the programs you have installed are displayed in the "Available updates" tab.

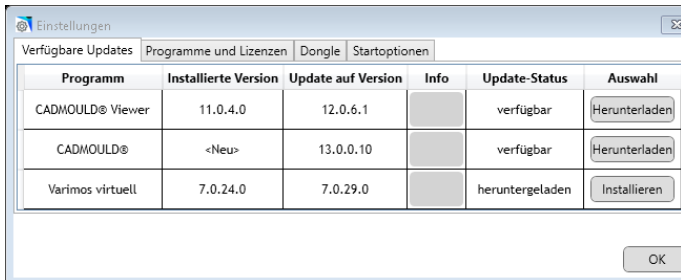


Fig. 6 Managing program updates

If available, the "Info" column contains a link to a document that describes the latest changes.

With the button in the "Selection" column, depending on the update status, the installer for the update can be downloaded or (afterwards) started. Administrator rights are required for installation.

4.3 Managing license files

The installed versions of CADMOULD are listed in the "Programs and licenses" tab.

Here is the option to individually configure the license file to be used for the program start by choosing the "Select" button for every CADMOULD version that has been identified. In addition, the license path of a CADMOULD installation can be reset by right-clicking on the corresponding program version.

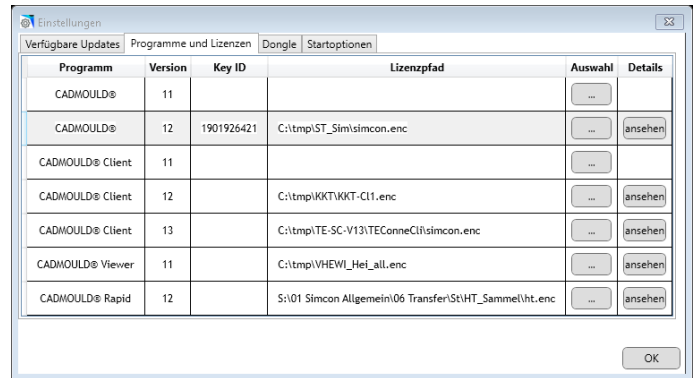


Fig. 7 Managing license files

In addition, the available module configurations and dongles that fit can be displayed and selected for the program start in the "Details" column using the respective "View" button.

So first select a license file as described in the last section and then click on "View".

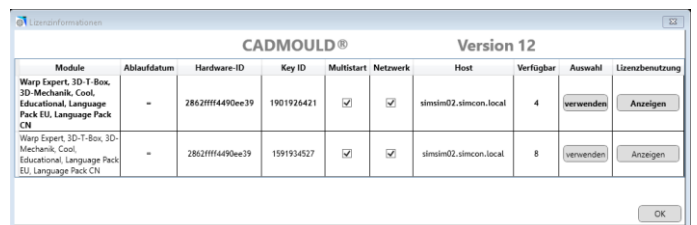


Fig. 8 Illustration of license options

This view shows the possible combinations of licenses contained in the license file and the available dongles. By clicking on "use" the respective combination is set for the program.

Other useful information is also displayed, such as the expiry date of the license, the key ID of the dongle, in the case of network-compatible dongles also the host and the number of remaining licenses on the dongle.

The current license usage can be displayed in a browser if the "Allow remote access to ACC" is activated on the dongle host in the "[Sentinel Admin Control Center](#)".

4.4 Managing dongles

Available dongles can also be listed and managed in general within the "Dongles" tab in the "Settings" menu.

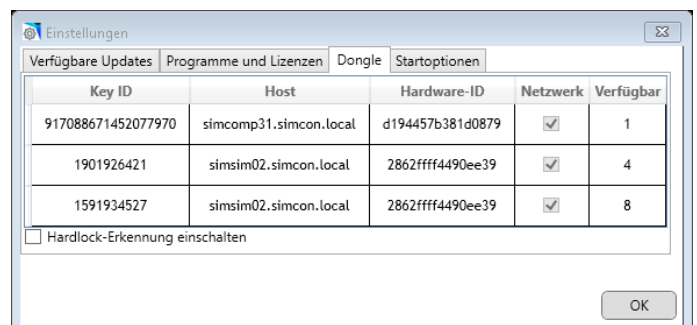


Fig. 9 Managing dongles

4.5 Other functions

Other functionalities such as overview of used licenses can be looked up in the manual.